

TimeMaster GMXFM1D & GMX2FM2D Series Electronic Time Controls

APPLICATION

The GMXFM1D and GMX2FM2D Series are universal electronic time switches within UL TYPE 1 indoor or UL TYPE 3R outdoor enclosures intended for the control of lighting, heating, air conditioning, pumps, motors, or general electrical circuits in residential, commercial, industrial and agricultural facilities. Basic models are:

| Series | Description |
|------------|--------------------------------------|
| GMXFM1D20 | 1 channel SPDT 20 program electronic |
| GMXFM1D50 | 1 channel SPDT 50 program electronic |
| GMX2FM2D50 | 2 channel 2 x SPDT 50 programs |

SPECIFICATIONS

Switch Rating: SPDT Switch

GMXFM1D Series Switch Ratings:

N.O. Contact:

- 1/2hp, 120 V ac
- 1hp, 240 V ac
- 8 A, 24 V dc resistive
- 16 A, 277 V ac resistive
- 12 A Ballast, 120 V ac
- 8 A Ballast, 240 V ac
- 720 VA 240V ac Pilot Duty
- 360 VA 120 V ac Pilot Duty
- 1000W Tungsten, 240 V ac
- 600W Tungsten, 120 V ac

N.C. Contact:

- 16 A, 277 V ac resistive
- 8 A, 24 V dc Pilot Duty
- 360 VA, 120 V ac Pilot Duty

3 year Reserve (Non-Replaceable Battery)

ENVIRONMENTAL RATINGS

Ambient Temperature: -14°F to 131°F (-10°C to 55°C)

WIRING CONNECTIONS

Screw clamp terminals for up to AWG #10 wires

Agency Approvals: UL Listed

INSTALLATION

Note: For outdoor locations, Raintight or wet location conduit hubs that comply with requirements of UL 514B (standard for fittings for conduit and outlet boxes) are to be used.



GMXFM1D20

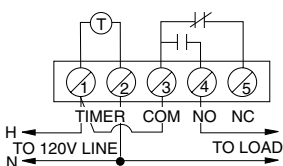
1. Remove 2 screws retaining the interior cover panel and remove panel by prying out with a thin blade at the top.
2. Select knockouts to be used. Remove the inner (1/2") knockout by inserting a screwdriver in the slot and carefully punch knockout loose. Remove slug. If the 3/4" knockout is required, remove the outer ring with pliers after removing the 1/2" knockout. Smooth edges with knife if necessary.
3. Place enclosure in desired mounting location and mark the three mounting holes.
4. Drill holes for #10 screws, start screws in holes.
5. Place enclosure over screws and tighten screws.
6. Connect conduit hubs to conduit before connecting the hubs to the enclosure. After inserting hubs into enclosure, carefully tighten hub lock nut. Do not over-torque.
7. Wire in accordance with National and Local Codes.
8. Replace interior cover panel and 2 screws.

Grounding: This enclosure is of plastic construction and does not require a ground connection and does not require bonding in pool applications.

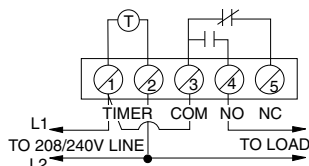
This enclosure does not provide grounding between conduits. When using non-metallic conduit or cable, connect the ground wires of all cables together with a wire nut. When metallic conduit is used, use grounding type bushings and a jumper wire between each conduit.

Typical Wiring Diagrams

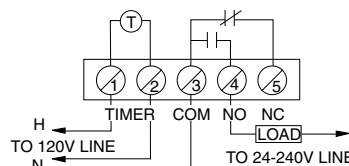
120V Timer, 120V Load



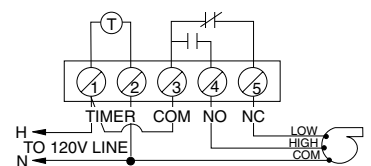
208/240V Timer, 208/240V Load



120V Timer, 24V, 120V, or 240V Load



120V Two Speed Fan



GMXFM1D and GMX2FM2D Series Program Schedules

| Prog | ON/OFF | h | m | Day(s) |
|------|--------|------|----|--------------------------------|
| Ex | On | 7 am | 30 | Mon., Tue., Wed., Thurs., Fri. |
| 1 | | | | |
| 2 | | | | |
| 3 | | | | |
| 4 | | | | |
| 5 | | | | |
| 6 | | | | |
| 7 | | | | |
| 8 | | | | |
| 9 | | | | |
| 10 | | | | |
| 11 | | | | |
| 12 | | | | |
| 13 | | | | |
| 14 | | | | |
| 15 | | | | |
| 16 | | | | |
| 17 | | | | |
| 18 | | | | |
| 19 | | | | |
| 20 | | | | |
| 21 | | | | |
| 22 | | | | |
| 23 | | | | |
| 24 | | | | |
| 25 | | | | |
| 26 | | | | |
| 27 | | | | |
| 28 | | | | |
| 29 | | | | |
| 30 | | | | |
| 31 | | | | |
| 32 | | | | |
| 33 | | | | |
| 34 | | | | |
| 35 | | | | |
| 36 | | | | |
| 37 | | | | |
| 38 | | | | |
| 39 | | | | |
| 40 | | | | |
| 41 | | | | |
| 42 | | | | |
| 43 | | | | |
| 44 | | | | |
| 45 | | | | |
| 46 | | | | |
| 47 | | | | |
| 48 | | | | |
| 49 | | | | |
| 50 | | | | |